



Consultancy Services



Associated Consultants

Eng. Essam Abaza & Dr. Sahar Attia



Associated Consultants Background Information

AC profile

Sample of Projects



AC Profile





About the Associated Consultants– What we do?

Since 1988, assisted by senior and junior, permanent and part time staff, AC Egypt has been involved successfully in multidisciplinary projects ranging from Architectural Design, to Urban and Regional Planning, Urban Policies and Strategies to Landscape and Interior Design.







Who we are?



Professor Sahar Attia is the managing director and the head of the Planning & Urban Design Department in AC. She is responsible for all urban development projects in the company. She has an extensive experience in several disciplines. She is able to manage, coordinate, and work in close liaison with different experts for problem identification, priority setting, and solution design and implementation. She is qualified to take the right decisions objectively deploying all the available potentials. She strongly believes in the spirit of team work, which is reflected in the quality of AC deliverables, in her work, she puts emphasis on environmental issues, to ensure the sustainability of her designs

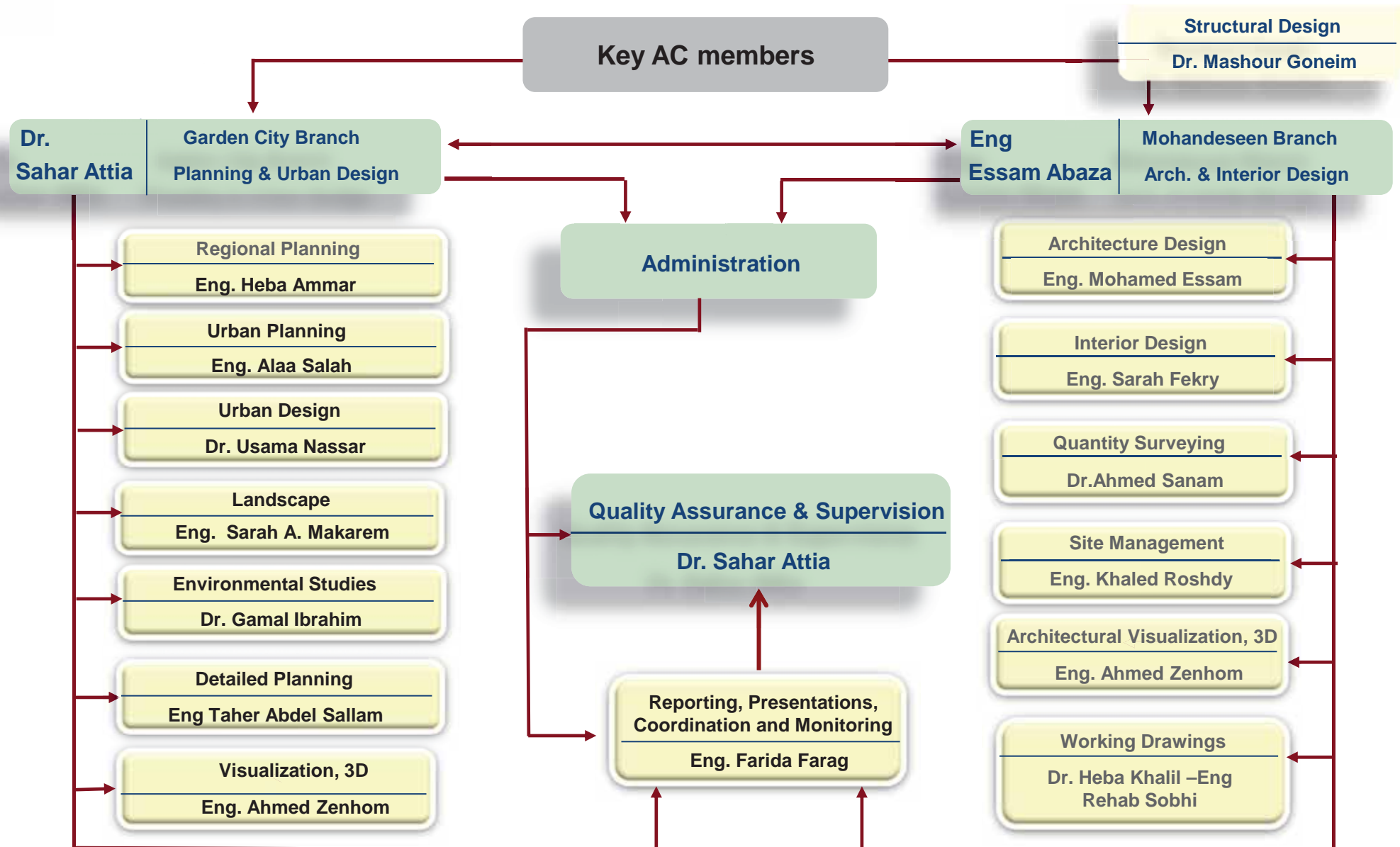


Architect Essam Abaza is the CEO of AC. He leads the Architecture Department in the company. He has over 30 years of professional experience in architecture and design. He has worked in Paris-France with Heckly – Prache Architecture office from 1985 to 1988 in diverse projects where he gained his expertise in designing classical buildings, combined with modern architectural trends and elements. “First Residence” building in Giza is a good example for the quality of his postmodern designs. He also excels in hotels, public and residential buildings. He has been supervising and managing a wide array of projects where he showed leadership and high decision-making skills.



Associated Consultants

We are A qualified and efficient Team,





Our Principles

Our team designs in harmony in accordance to clients' wishes and needs. We are committed to excellent quality, sound cost, and timely implementation. We tend to study and analyze our assignments contextually in order to design long-term and sustainable solutions. We believe in the economic, social, environmental, and institutional sustainability as the four main pillars of a sustainable development. In turn, we believe that sustainable urban development is key to achieve better living conditions for all the society.

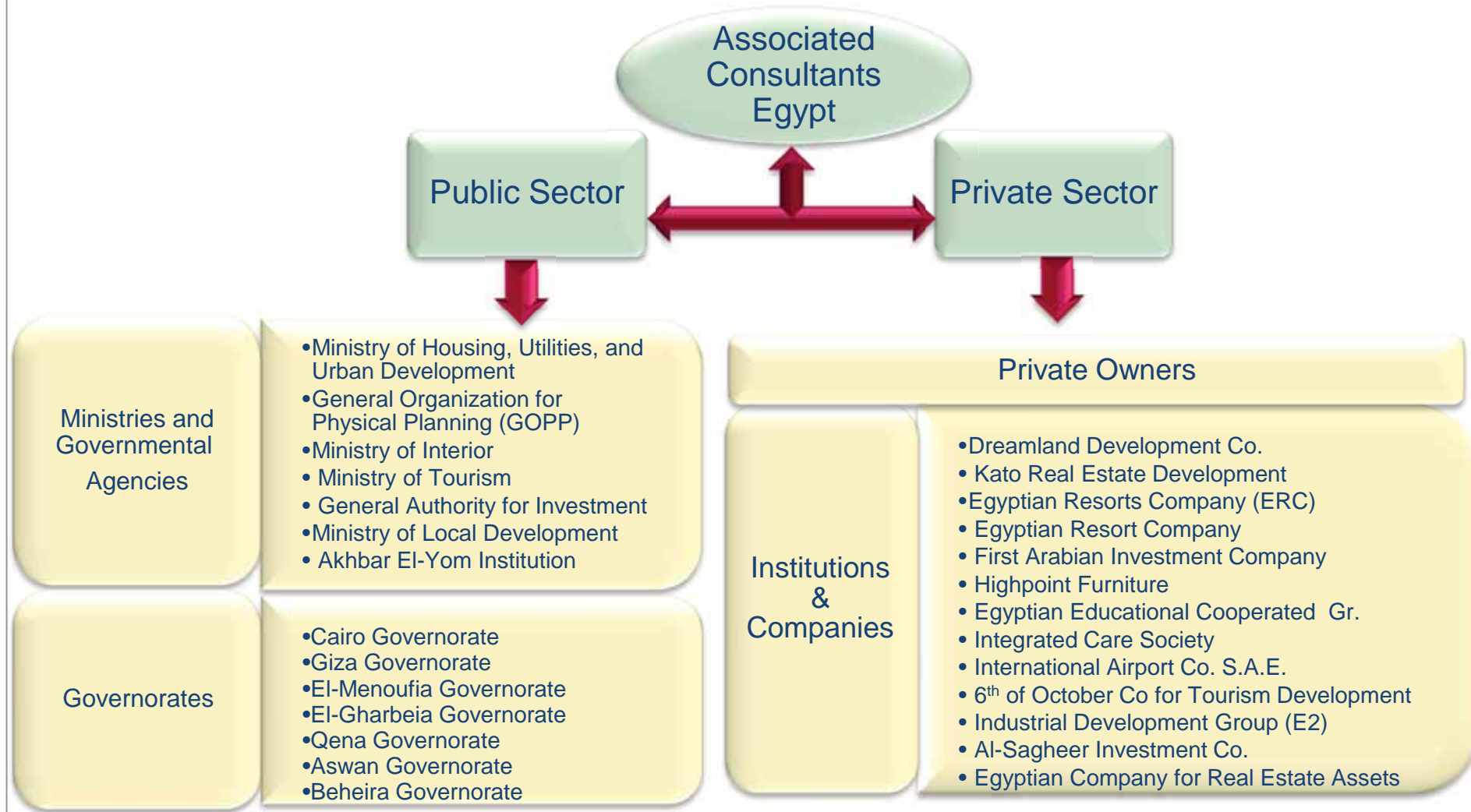
We are qualified to take the right decisions objectively depending on the available local resources and potentials. We believe that a place and its context, has its source in the analysis of culture, morphology and history. Thus, in our work we capitalize upon these principles. We also believe in public participation as one of the fundamental pillar of contemporary planning.





Our Main Clients

We provide consulting services to a wide and diversified clientele within the public and private sectors. We are targeting clients, investors, and organizations who seek creativity, efficiency and outstanding performance





Associated Consultants

Our Partner Offices

We develop joint ventures with well-known national and international firms for specific expertise as needed.



INTERNATIONAL

Dr. Maher Stino Dr. Laila El Masry



International Center for
Engineering Consultations



Associated Consultants

Associated Consultants – Introduction

Our team designs in harmony in accordance to clients' wishes and needs. We are committed to excellent quality, sound cost, and timely implementation. We tend to study and analyze our assignments contextually in order to design long-term and sustainable solutions. We believe in the economic, social, environmental, and institutional sustainability as the four main pillars of a sustainable development. In turn, we believe that sustainable urban development is key to achieve better living conditions for all the society.

We are qualified to take the right decisions objectively, depending on the available local resources and potentials. We believe in the importance of understanding "the place" and "the context" through a thorough analysis of its culture, morphology, and urban history. Thus, in our work we capitalize upon these principles. Furthermore, we believe in public participation as one of the fundamental pillar of contemporary planning.





Sample of projects

size, complexity and scope





Associated Consultants

1- Ras- Sedr Resort & service apartment – Ras Sedr, South of Sinai Governorate – 2009 to be completed 2012

Architectural Projects - Resorts

Owner

Department of public Relations - Ministry of Interior

Project Status

Under construction

Project Tasks

Architecture Design - Landscape , Interior, Structural, EMP, Project Management and Site Supervision., tasks started with Conceptual design till tender documents.

Project Synopsis

Located in Ras Sedr, this resort comprises 150 units (serviced flats) overlooking an organic-shaped extended pool. The resort includes various recreational facilities ,a spa, and an indoor sport center. Staff house, workshops, sports courts .The use of Palms in the landscape adds richness, and valorize all outdoor areas



Picture taken during construction



Owner

Kato Real Estate
Development

Project Status

Under Construction

Project Tasks

Master Planning & Urban
Design – Architecture
Design , Landscap,
Structural design, EPM.

Project Synopsis

This new mini development is located to the south of the existing D type villas in Ghazala Bay . Although seemingly far, this phase is only 700 meters away from the main beach and have a direct road serving the mini hie.the extension comprises a cluster of private villas , and a row of serviced villas, as extension of the existing hotel in the area





4- Sheraton Taba Extension – Taba, Sinai

Owner

6th of October Co. for
Tourism Development
(Bahgat Group)

Project Status

completed in 2009

Project Tasks

Architecture Design -
Landscape , Interior,
Structural, EMP, Project
Management and Site
Supervision., tasks
started with Conceptual
design till tender
documents.

Project Synopsis

This Hotel resort
comprises 260 Rooms all
situated around a large
swimming pool. The hotel
complete the scene,
forming the foreground of

The hotel contains many
amenities such as a spa
and a gym. The total cost
of this project amounts to
62 Million L.E Sinai hills.





Owner

Dreamland Development Co.
Member of Bahgat Group

Project Status

Concept Design delivered
for approval

Project Tasks

Architectural Design -
Landscape Architecture
and project management

Project Synopsis

Juba Dream hotel is the first hotel in Juba, with 303 rooms, it includes multiple service facilities and restaurants. Project also includes serviced apartments with an area of 9000 m², and main office building (9000m²). The project location includes a shopping arcades with an area of 4600 m².





6- New Resort – Alex-Matrouh Desert Road , North Coast

Owner

Ministry of Interior,
Department of Land
Management

Project Status

2008.
Under tendering

Project Tasks

Planning-Architectural
Design - Landscape
Architecture

Project Synopsis

This resort contains a wide variety of accommodation options ranging from private and rental villas to hotel rooms. It comprises 275 villas and 313 hotel rooms. The main key in the design concept was the topography of the site. This topography gave the opportunity to design each unit with a separate garden.





Owner

Private Owners

Project Status

2008.
Under Construction

Project Tasks

Architectural & Urban
Design - Landscape
Architecture

Project Synopsis

The Highland Hills residential compound comprises 15 luxurious villas with all the necessary amenities. The project is constructed on 37000 sq.m. and costs 80 millions L.E.

Each villa is designed at the convenience of the owner, but the compound still has a strong architectural identity,





Owner

Ministry of Interior,
Department of Land
Management

Project Status

2008.
Under Construction

Project Tasks

Architectural & Urban
Design - Landscape
Architecture

Project Synopsis

The location of the club is in the middle of new developed communities, On an area of 51 feddan and a total cost of 160 million L.E, the club comprises a wide variety of facilities. For instance, tennis and squash courts, pools, a health club, and a food court. The club also comprises accommodation facilities for the athletes.





Hilton Luxor Renovation – Luxor City

Architectural Design & Site Supervision Projects

Owner

Joint Arab Investment
Cooperation

Project Status

Completed in 2006

Project Tasks

Architectural Design -
Landscape Architecture

Project Synopsis

Overlooking the Nile in Luxor, this hotel is equipped with different sorts of amenities .A sport center, and an outstanding Spa.

AC was assigned the responsibility of renovating the hotel and turning it to a luxurious venue.





Owner

Kato Real Estate Development Co.

Project Status

1999.
Completed

Project Tasks

Architectural Design,
Landscape Architecture
and Site Supervision

Project Synopsis

Former Movenpick, now Ghazala Sharm, On 33000 sq.m., this hotel, consists of 300 rooms, distributed along four All wings, overlooking the beach.

The resort comprises a spa on 1600 sq.m., a swimming pool on 1500 sq.m. terraces, lounges, and 3 restaurants,





Owner

Rowad Tourism Co.

Project Status

1999.
Completed

Project Tasks

Architectural Design

Project Synopsis

Ibrahim Pasha Hotel is located in Sahl Hasheesh and is designed on the Islamic style. The hotel comprises 85 rooms, front desks and administration back offices, restaurants, laundry, swimming pool and many recreational and sports amenities.





Owner

Dreamland Development Co. Member of Bahgat Group

Project Status

1998.
Completed

Project Tasks

Architectural Design
Landscape

Project Synopsis

The academy includes the main building (club house), service and administration buildings and different sport facilities, The ACE acting as the main consultant was responsible for the preparation of all design phases, starting from the conceptual design to a full package of detailed drawings including architectural, structural and Electro-mechanical works. The cost amounted to 35 million L.E.





Owner

Ministry of Communication and Information Technology

Project Status

2004.
Under Construction

Project Tasks

Spatial Planning, Urban Design -& Landscape

Project Synopsis

Nile University Campus is located at El Sheikh Zayed City. The Layout is designed in such a way to provide the most appropriate scientific environment that supports a Research University". It combines the formal Grid with the curved lines. "The 127 acres campus provides complete service facilities for students and faculty staff. .



Digital Icon, separating the housing blocks from the educational buildings



The central open space in the university acting as the main place for social interaction between the students



Owner

Dreamland Development Co. Member of Bahgat Group

Project Status

1998.
Completed

Project Tasks

Architectural Design

Project Synopsis

This mosque was designed to match the environment of Dreamland City. It has a distinguished character apparent in its colorful domes and its marbled piazza. The site's area is 4200 sq.m. and it can accommodate up to 1300 person.





Owner

General Authority for
Tourism –Aswan
Governorate

Project Status

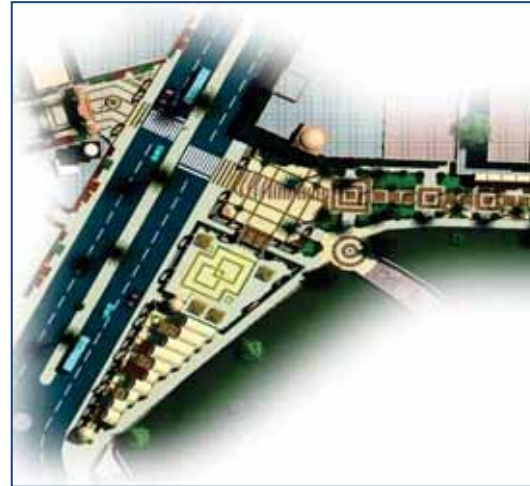
2006.
Completed.

Project Tasks

Landscape Architecture

Project Synopsis

The AC was hired to carry out all relevant studies regarding the revitalization of El Tabia Square in Aswan as a tool to promote tourism in Egypt. Phase 1 of the Project included the preliminary study of potential areas for tourism development in the city of Aswan, as well as the selection of action areas. Phase 2 included the schematic design, detailed drawings and site supervision of the arcades, and shops in the main square, El Tabia





Owner

General Organization of Physical Planning (GOPP)

Project Status

May 2010

1st prize in restricted international competition,

Project Tasks

Master Planning & Urban Design - Landscape Architecture

Project Synopsis

Associated Consultants Jointly with AECOM won the international competition for the “Revitalization and upgrading of the central zone of Khedive’s Cairo “, one of the leading projects for the new vision of Cairo 2050.





Owner

General Organization of Physical Planning (GOPP)

Project Status

May 2010

1st prize in restricted international competition,

Project Tasks

Master Planning & Urban Design - Landscape Architecture

Project Synopsis

The main objective of the project is to make a world class vibrant public realm for pedestrians that will increase the quality of life, stimulate economic vitality and create an exciting and comfortable experience for locals and tourists.





Associated Consultants

The International School of Choueifat – 5th District, Katameya, New Cairo

Architectural Design & Site Supervision Projects

Owner

Egyptian Educational
Co-Operated Group

Project Status

1994.
Completed

Project Tasks

Architectural Design -
Landscape Architecture

Project Synopsis

The Choueifat International school in Katameya is built on 91000 sq.m. The school premises include 6 educational buildings, an administrative building, 3 activity buildings comprising the library, the auditorium, and the cafeteria, 2 covered swimming pools, tennis courts, basketball, volleyball and a football field. It also includes 3 science labs, music and art rooms, and f3 buildings for staff housing.





Owner

Egyptian Resort Company (ERC)

Project Status

2008.
Completed

Project Tasks

Master Planning
Evaluation (Report).

Project Synopsis

AC was hired to evaluate 3 proposals submitted by 3 leading international firms for the master plan of phase 3 of Sahl Hasheesh Resort. The Resort covers an area of 2800 ha.

AC identified the cross-cutting evaluation criteria , and established a defined methodology for the evaluation process.



Courtesy: WATG proposed Master Plan (one of the three submitted proposals)



**The Development of El-Tabia Square,
Old Aswan**



**The Revitalization and Development of Khedival Cairo
Down Town Area, Cairo**



**The Design of a
Residential Area in
Imbaba, Giza Gov.**



**The Knowledge Viallge
in 10th of Ramdan City**



**The CBD in 10th of
Ramdan City**



**The Regional Services
Center in 10th of
Ramdan City**



Project team and Qualifications



Contacts

Garden City Branch

9 Rostom Street, Garden City

114841 – Cairo, Egypt

Tel.: + 202 – 27922209

Fax: + 202 – 27963631

Mob.: + 2 0128 – 2157151

Sahar.attia@gmail.com

Mohandeseen Branch

7, Omar Ben Abd Elaziz St., Mohandessen,
12411 – Cairo, Egypt.

Tel.: +2 02 37490124 - +2 010 1144448

Fax: +2 02 37498378

e-mail: ac2008@acegypt.com